



## MEETING MINUTES

**Name of Organization:** Nevada Early Intervention Interagency Coordinating Council (ICC)

**Date and Time of Meeting:** Tuesday, May 23, 2023  
10:00 AM

**Meeting was held virtually at:**

### Microsoft Teams meeting

**Join on your computer, mobile app or room device**

[Click here to join the meeting](#)

Meeting ID: 291 384 184 370

Passcode: UabPab

[Download Teams](#) | [Join on the web](#)

**Or call in (audio only)**

[+1 775-321-6111,,94128851#](#) United States, Reno

Phone Conference ID: 941 288 51#

[Find a local number](#) | [Reset PIN](#)

Thank you for planning to attend this Teams meeting.

[Learn More](#) | [Meeting options](#)

Pursuant to NRS 241.020(3)(a) as amended by Assembly Bill 253 of the 81st Legislative Session, this meeting will be convened using a remote technology system and there will be no physical location for this meeting. The meeting can be listened to via telephone or viewed live over the Internet.

Public comments may be submitted by email at [mgarrison@dhhs.nv.gov](mailto:mgarrison@dhhs.nv.gov) by 2:00 p.m. on Monday, May 22, 2023. Please include your name and the corresponding agenda item number, if applicable, with any comments submitted. Written comments should contain no more than 300 words. Public comments received by the deadline will be posted on the board's website before the start of the meeting and noted for the record as each action item is heard by council ([Meetings \(nv.gov\)](#)).

## MINUTES

### I. **Call to Order, welcome, and announcements**

Interim chair, Lori Ann Malina-Lovell, welcomed all on the call. A quorum of members was present, and the meeting was called to order at 10:02 am.

**Members Present:** Dawn Brooks, Kellie Hess, Lisa Hunt, Robin Kincaid, Rhonda Lawrence, Sandra LaPalm, Sarah Horsman, Crystal Johnson, Janice Lee, Catherine Nielsen, Keana Sullivan, Jenna Weglarz-Ward

**Members Absent:** Assemblywoman Tracy Brown-May, Andre' Haynes, Valeria Gundersen, Kristin Hoxie, Kate Osti, Karen Shaw, Brittany Toth

**Public Attendees:** Christa Allan, Therapy Management Group (TMG); Linda Anderson, Nevada Public Health Foundation; Ruby Batz, University of Nevada, Reno; Laurie Bauer, Division of Health Care Financing and Policy (DHCFP); Tonya Blochowiak, DHCFP; David Cassetty, Nevada Division of Insurance; Abbie Chalupnik, ADSD; Karen Frisk, Nevada Early Intervention Services (NEIS)-Northeast; Sheila Garner, NEIS-Las Vegas; Randi Humes, ADSD; Marnie Lancz, TMG; Lisa Manning, Capability Health and Human Services (CHHS); Julie Ortiz, Advanced Pediatric Therapies (APT); Jessica Roew, NEIS-Carson; Debra Stewart, MDDA; Fatima Taylor, NEIS-Las Vegas; Lindsay Wood-Lopez, NEIS-Las Vegas

**Part C Support Staff:** Mary Garrison, Lori Ann Malina-Lovell, Jalin McSwyne, Lauren Roscoe, Pam Silva, Melissa Slayden

## II. Public Comment

Lori Ann Malina-Lovell asked if there were any public comments on the teleconference, or if any comments had been submitted. No comments were made or submitted.

## III. Approval of the Minutes from the January 30, 2023, Meeting (For Possible Action):

Lori Ann Malina-Lovell asked the council if there were any edits needed to the minutes from the January 30, 2023, meeting minutes.

**Motion:** Approve meeting minutes from January 30, 2023, ICC Meeting as presented.

**First:** Catherine M. Nielsen

**Second:** Dawn Brooks

**PASSED**

## IV. Aging and Disability Services Division Updates

### a. Early Intervention System Analysis

Sarah Horsman and Jessica Roew shared about the Early Intervention System Analysis. Sarah shared that the project is in the scope and deliverables stage.

### b. NEIS Health Screening & Guidance

Sarah shared that ADSD did release new guidance on March 20th, 2023. The most notable change was that the requirement for masks has been lifted. It is still recommended for families and staff, but no longer a requirement. There is also guidance specific to staff and information stating that Early Intervention is provided in person primarily. The screener and memorandum were shared in the handouts.

### c. Nevada Early Intervention Data System (NEIDS)

Sarah shared that the system was surveyed for name suggestions for the new data system, and Nevada Early Intervention Data System (NEIDS) was selected. The tentative go-live date is still Fall 2023. Robin Kincaid asked if the new system would assist with the timelines for reporting of children transitioning from Part C to Part B. Melissa Slayden said that based on the discussion with the developers, the new system should assist with reporting timelines.

**d. Legislative Updates**

Sarah shared that the current legislative updates that they are following are 13114 and 13116. One will require medical providers to provide evidence-based information to prospective and current parents of babies born with Down Syndrome. Our budget recently closed, and the legislature has approved the removal of the 50/50 split. Currently what was in statute is that we had to maintain a budgeted authority caseload of 50% of children in state facilities and 50% with the community providers. The 2022 System Rate Study Increase was also approved.

**e. Early Intervention In-Person and Telehealth Report**

Randi Humes shared the Early Intervention In-Person and Telehealth Report. Sarah shared that the EI System has experienced critical staff shortages that has led to a delay on some services being provided, at the time, specifically in the Reno area. In August 2022, sixty children were waiting to receive Special Instruction. At the time of this meeting, thirty children were waiting for Special Instruction. The Northeast region is also in need of a Physical Therapist; therefore, families have been offered telehealth services by Reno and Vegas physical therapists. Fatima Taylor also shared that due to Community Provider closures, the Southern state office has been monitoring to see if programs may be impacted with a wait list for services from absorbing all those active children and that currently they do not have a wait list for services, but some services could be delayed just because of getting parents to come in. Rhonda Lawrence asked if there was a trend in the reason for closure of these offices. Sarah said while it was not solely due to the rates needing to be increased, that change will surely have a positive impact on current programs.

Rhonda said that with a new system that streamlines some of the billing, that may be beneficial to programs as well. Jenna Weglarz-Ward asked about the delayed services and if there is information on how long of a delay families are experiencing. Jenna also wanted to know what positions each location needs to hire. Sarah and Jessica explained it varies by region. Robin Kincaid asked if families are transitioning from a program that is closing, are they required to go to a new program in person to re-establish services? Sarah said no. Rhonda Lawrence stated that other divisions are using Accelerated Pay to help with onboarding.

**f. Early Intervention Program Highlights (Information)**

Program highlights were shared in the meeting packet.

**V. Developmental Disabilities Awareness Day 2023 (Information Only)**

Catherine M. Nielsen shared about Developmental Disabilities Awareness Day 2023, That was on March 7, 2023, where they had 75 individuals with disabilities and family members joining us to learn about the legislature and the legislative session. On March 8, 2023, we had the Developmental Disabilities Awareness Day at the legislature, where we had about 150 people in person attend and meet with different representatives and sat on the legislative floor during sessions.

**VI. Nevada Early Intervention Professional Development Center (Information Only)**

Lori Ann Malina-Lovell shared about the Nevada Early Intervention Professional Development Center, or PD Center for short. This initiative was started in 2022 when the Part C Office and ADSD found that there was a critical staff shortage of Developmental Specialists in Nevada’s Early Intervention Services. Last summer, we submitted a proposal to the Director’s Office because there was available American Rescue Plan funding through the

Governor's Finance Office. We plan to expand to address shortages with other disciplines such as therapists, and we also would like to expand our course options to support our ICC and any stakeholders who may be interested in learning about Early Intervention. We want to include communities of practice as well for families. Lori Ann went over the comparable coursework, the ribbon cutting ceremony, the plan to hire contractors, and the subscription to EBSCO, which is a research-based platform that allows our learners to perform academic research with peer reviewed journal articles.

Dr. Jenna Weglarz-Ward asked if there is a plan for funding once the ARP funds are expended. Yes, we have discussed with Governor Lombardo regarding sustaining this effort.

We met with the Governor's Finance Office and the Inter Finance Committee (IFC) in February, when our subscription for EBSCO was there on the table for their approval. Governor Lombardo did ask us regarding our plans for after the ARP funds are depleted, and we did let him know that we do have the funding to be able to continue our subscription with EBSCO. As for a contractor position, we will have funds available for one full time and one part time contractor position through the year 2025 and thereafter, we would have to determine whether we will still continue to need both contractor positions and whether we can request to the legislature to allow us a full-time position for that.

## **VII. IDEA Part C Information and Reports (Information Only):**

### **a. Part C Updates**

Lori Ann shared that there are many conferences that the Part C Office would be happy to support ICC members in attending. Information regarding the Office of Special Education Programs (OSEP) and the Division of Early Childhood (DEC) Conferences happening in 2023. Mary Garrison shared that the Part C Carson City office is now open.

Melissa Slayden stated that Part C Federal Deadlines are being moved to align with Part B deadlines. Melissa shared that the data is showing large amounts of growth.

Lori Ann shared the grant allocation amount in the chat. With an increase of approximately \$300,000.00, much of the funds will go towards direct services in Early Intervention.

Robin Kincaid asked if OSEP has indicated any plans for an onsite visit with Part C. Lori Ann shared that OSEP will be visiting Part C and Part B in November 2023 for Differentiated Monitoring and Supports (DMS). We do not have an agenda yet but will share when available.

### **b. Complaint Log and Family Concerns**

One (1) formal complaint was shared by Lori Ann. Family requested in person Physical Therapy Services, but the program did not have availability. The program and Part C worked with the family to resolve this issue. Lori Ann also shared about other complaints received that were not escalated to a formal complaint. Pam Silva shared that several informal complaints have recently been received where families were wanting to move programs due to a delay in certain services. Lauren Roscoe shared that there has been one complaint in the south regarding service frequency. That family has transferred to a new program.

### **c. Nevada Pyramid Model**

Mary Garrison shared that the State Leadership Team has met in person twice since the last ICC meeting. Nevada was represented by the Quality Assurance Team at this year's National Training Institute.

d. **Early Intervention Family Survey 2023**

Melissa Slayden shared that the Family Survey closed on May 5, 2023.

e. **Implementation requirements set forth by Nevada Revised Statutes (NRS) 239B.022-239B.026, related to the collection of Sexual Orientation and Gender Identity and Expression (SOGI) data**

Lori Ann Malina-Lovell shared about implementation requirements set forth by Nevada revised statutes as listed related to the collection of sexual orientation and gender identity and expression, or SOGI for short. Lori Ann shared about parent concern received regarding requested SOGI information. Lori Ann reviewed the statute and the information requested of families with the council.

Dr. Jenna Weglarz-Ward asked if this information is requested of the parent or child. Lori Ann explained this is pertaining to the child. Dr. Weglarz-Ward shared that this information can be used as a data point, but in some cases can also be used as a way of excluding a population, therefore, she can sympathize with family concerns. Robin Kincaid suggested a standard script, but that the conversation with family could go better if we could explain how this data is used.

Fatima Taylor requested support from stakeholders and councils in speaking to the legislature about how this collection of information can be better received by families.

Dr. Weglarz-Ward stated that explaining about data security may also be an important part of the conversations with families.

The ICC expressed interest in writing a letter of support regarding suggestions for the collection of SOGI data within the Early Intervention population during their retreat.

**VIII. Interagency Coordinating Council (ICC) Future Meeting Scheduling and Agenda Items (For Possible Action)**

- a. ICC 2023 Retreat, July 27-28, 2023, Reno, NV
- b. October 2023 Quarterly Meeting

Mary Garrison shared the concerns and restrictions within the Part C office. The ICC voted to have the retreat moved to October 2023, in Reno, NV. This will be a 2-day retreat, where the ICC will complete training and strategic planning.

**Motion:** Cancel previously scheduled ICC Retreat and schedule July 2023 ICC meeting for Thursday, July 20, 2023, at 1 PM and ICC Retreat October 11-12, 2023, at the Reno Sparks Convention Center

**First:** Catherine M. Nielsen

**Second:** Dawn Brooks

**PASSED**

Mary Garrison explained to the council that she did not include the voting for a co-chair on today's agenda as she is waiting on the Governor's office to approve Andre' Haynes new appointment.

## IX. Public Comment:

Abbie Chalupnik, ADSD Quality Assurance shared the reason that the SOGI data is being collected is to inform health care providers of the person's right to be addressed in whichever way they feel most comfortable. Agencies are also responsible for training those cultural competencies into their staff to understand the realities of what these populations are experiencing when seeking services.

Dr. Weglarz-Ward shared that the University of Nevada, Las Vegas (UNLV) is conducting a research study to learn about children with disabilities and inclusion in childcare. Information will be shared in late summer regarding participation in the study, and results should be available this fall.

Kelly Hess asked if the retreat is mandatory. Mary Garrison advised it is not, but we will need to have quorum.

Rhonda Lawrence shared updates regarding the Division of Child and Family Services (DCFS) within Infant and Early Childhood Mental Health. There are several amazing projects that are starting. We did have liftoff for the Nevada Association for Infant and Early Childhood Mental Health, and so this is an association that is multidisciplinary across all sectors or programs or services for children that involve social and emotional development and learning. We have had some kickoff meetings and road map meetings and so we are formally a board, which is exciting. We will be supporting the Infant and Early Childhood Mental Health endorsement, and so there may come a time and an opportunity to have a presentation on that.

The second program I'm here to talk about is an ARPA funded program that has now been included in the Governor's budget and our budget closed. That is an Early Childhood Day Treatment Program here in Reno at Northern Nevada Child and Adolescent Services.

It's a program that is a three (3) to six (6) year old program. Many of you are familiar with the project Safe and Growing that had been here in our clinic for many, many years.

That program was not able to sustain itself, so this will now be a Division of Child and Family Services program. We are currently hiring Developmental Specialists III to be the classroom leads.

We hope to have two classrooms up and running, hopefully by the end of the year.

That will serve a morning session and afternoon sessions, and the capacity would be about 24 children.

## X. Adjournment

The meeting was adjourned at 12:28 PM.

NOTE: Meeting minutes were created using Microsoft Teams Transcript. If you would like the original transcript for this meeting, please contact the IDEA Part C Office at [projectassist@dhhs.nv.gov](mailto:projectassist@dhhs.nv.gov).

**Nevada Early Intervention Services  
Management Analyst Unit**

**Report request:** Number of children who are receiving in-person services  
**Report requestor:** Interagency Coordinating Council (ICC)  
**Request date:** 04/28/2022 (*requested quarterly updates*)  
**Data gathered:** 06/26/2023  
**Report completed by:** D. Race, MAII

Early Intervention (EI) is a system of services and supports individually designed to help families meet the specific needs of their children. EI programs provide services based on the regulations provided by Part C of the Individuals with Disabilities Act (IDEA) to children under age three. The EI system includes children who are served by Nevada Early Intervention State Programs and Comprehensive Community Provider Programs.

The intention of this report is to show an update from the previous reports completed on 03/27/23 and 06/07/22. The provision of in-person services has continued to increase following the update to the EI system's COVID-19 protocol allowing the return to in-home and community-based services.

Service-related data were collected from TRAC-IV, Nevada's Part C IDEA data system, on 6/26/23. These are point-in-time data and are specific to children who are currently receiving services<sup>1</sup>. 3,274 children were identified with 8,781 ongoing services<sup>4</sup> throughout the early intervention system.

Table 1 and Table 2 below show the comparison between current data and the previous report completed on 03/27/23 of point-in-time data representing the number of services identified as being provided in-person or via a telehealth related platform. Table 3 shows a comparison of current data and the data collected last year at this time (June 2022). Graph 1 and Graph 2 show the comparison between current data and the previous report completed on 03/27/23 of point-in-time data representing the percentage split between the location of services. Graph 3 shows a comparison of the current data and data collected last year at this time (June 2022).

Current data indicate that in-person services have increased by 116% from the original data set obtained on 01/31/22 where 3,787 services were identified as being provided in-person. The ratio of services to individual child has remained consistent across the reporting periods. Current data indicate an increase of 51% from the data obtained on 06/08/22 where 5,417 services were identified as being provided in-person.

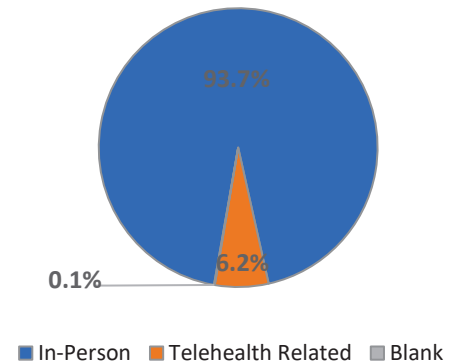
*†See data notes below for more information.*

**Nevada Early Intervention Services  
Management Analyst Unit**

**TABLE 1: Services by Location – Current data from 06/26/23**

| Location <sup>2</sup> | Number of Children <sup>1,3</sup> | Number of Services <sup>4</sup> | Ratio of Services to Child <sup>5</sup> |
|-----------------------|-----------------------------------|---------------------------------|---|
| In-Person             | 3,199                             | 8,178                           | 3:1                                     |
| Telehealth Related    | 341                               | 541                             | 2:1                                     |
| Blank                 | 8                                 | 8                               | 1:1                                     |
|                       | <b>3,274</b>                      | <b>8,781</b>                    | <b>3:1</b>                              |

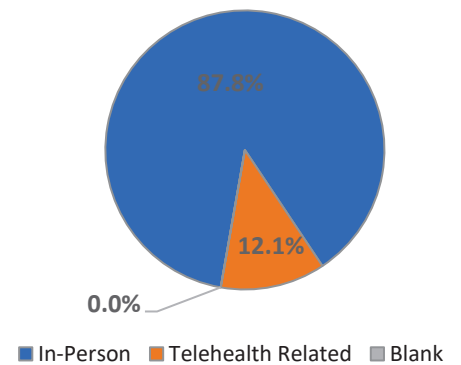
GRAPH 1. Services by Location  
Current data from 06/26/23



**TABLE 2: Services by Location – Comparison from 03/27/23**

| Location <sup>2</sup> | Number of Children <sup>1,3</sup> | Number of Services <sup>4</sup> | Ratio of Services to Child <sup>5</sup> |
|-----------------------|-----------------------------------|---------------------------------|---|
| In-Person             | 2,853                             | 7,270                           | 3:1                                     |
| Telehealth Related    | 547                               | 1,005                           | 2:1                                     |
| Blank                 | 1                                 | 1                               | 1:1                                     |
|                       | <b>2,997</b>                      | <b>8,276</b>                    | <b>3:1</b>                              |

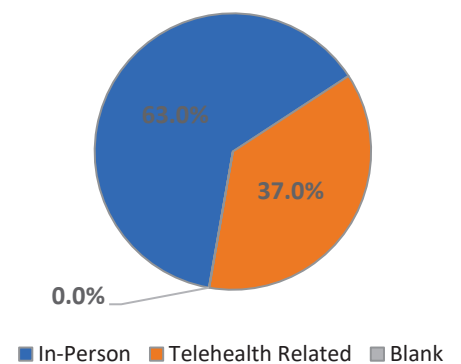
GRAPH 2. Services by Location  
Comparison from 03/27/23



**TABLE 3: Services by Location – Comparison from 06/08/22**

| Location <sup>2</sup> | Number of Children <sup>1,3</sup> | Number of Services <sup>4</sup> | Ratio of Services to Child <sup>5</sup> |
|-----------------------|-----------------------------------|---------------------------------|---|
| In-Person             | 2,346                             | 5,417                           | 2:1                                     |
| Telehealth Related    | 1,595                             | 3,178                           | 2:1                                     |
| Blank                 | 3                                 | 3                               | 1:1                                     |
|                       | <b>2,990</b>                      | <b>8,598</b>                    | <b>3:1</b>                              |

GRAPH 3. Services by Location  
Comparison from 06/08/22





## Nevada Early Intervention Services Management Analyst Unit

†Data Notes:

<sup>1</sup> Includes children in Active status (demographics) who are receiving ongoing services that are in “Current” status. Does not include services previously received or those that have not yet initiated. Report excludes any child who has zero ongoing services initiated but may be in Active status (demographics).

<sup>2</sup> In-person services include those identified with a service method of “Individual”, “Co-treatment”, and “Consultive”. Telehealth related services include those identified with a service method of “Telehealth” and “Telehealth/Co-Treatment”. Blank indicates that no selection was made by the program; these data are incomplete and cannot be categorized by location.

<sup>3</sup> The count of children has been unduplicated per location. The location categories, however, are not mutually exclusive and children may be included in both groups. A child may receive multiple services across locations, and/or they may receive the same service in both locations. For example, a child may receive physical therapy in person but speech therapy via telehealth or a child may receive speech 1x month in-person and 1x month via telehealth. The total child count is unduplicated across all locations.

<sup>4</sup> The service-related data include ongoing services identified in “Current” status. This report does not include services previously received or assessments needed to identify ongoing service frequency. Service-related data may be duplicated by child if the child receives the same service but with different methods of delivery, i.e., individual and co-treatment.

<sup>5</sup> Ratio of services to child represents the number of services by location and overall, by an individual child. The ratio reads services:child.

A moratorium was placed on in-person services due to COVID-19 on 3/16/20. Decreases in caseload and services may be related to Governor's directive to shut down all non-essential businesses and engage in social distancing. In-person services slowly resumed with some clinic-based services starting in January 2021. In December 2021 EI initiated a return to community-based services. A pause on in-person services was instituted in January 2022 due to increased test positivity rates. This pause was lifted in February 2022. On 5/20/22, the governor declared an end to the emergency order enacted during the onset of COVID-19. In-person services have continued to increase over time and have been re-introduced to the child's natural environment.

**NEIS South Quarterly Program Highlights**

**April 1, 2023 - June 30, 2023**



**Report Areas:**

1. Outreach Activities & Community Collaborations
2. Interagency Coordinating Council (ICC) Activities
3. Trainings

**1. Outreach Activities & Community Collaborations**

- UMC Spring Family Wellness Event
- Grant-A-Gift Walk
- All in a Day's Play
- Military Special Needs Information Fair

**2. Interagency Coordinating Council (ICC) Activities**

**3. Trainings**

*NEIS Staff attended the following:*

- Mentor Training for new Developmental Specialists
- Genetics Training
- Down Syndrome Connections- Presentation



# THErapy MANAGEMENT GROUP

## PROGRAM HIGHLIGHTS – JULY 2023

### THErapy MANAGEMENT GROUP CONTINUES TO PROVIDE SERVICES IN NORTHWESTERN AND SOUTHERN NEVADA.

- Both regions are serving the largest caseloads in the history of the company.
- TMG South accepted transfers from Positively Kids when they closed their doors in April.
- TMG is conducting weekly developmental playgroups in both regions.
- TMG has multiple Developmental Specialists who are part of EI PD DS Training Series
- TMG completed comprehensive monitoring with the Part C office for both regions

## COMMUNITY EVENTS

- TMG South hosted a Spring Picnic for all of our clients.

## TRAININGS THIS QUARTER

- TMG had 4 staff attend the ADOS training in Reno in June.



8020 W Sahara Suite 160  
Las Vegas NV 89117200  
200 S Virginia St. 8th Floor  
Reno NV 89501

PHONE 702-595-5437  
FAX 702-425-2787  
EMAIL [contact@tmgnv.com](mailto:contact@tmgnv.com)  
WEB SITE [www.tmgnv.com](http://www.tmgnv.com)

**NEIS Reno ICC Updates  
July 2023 to September 2023**

- Child Find Activities
  - 7/29/23 Family Health Festival
  - 8/17/23 UNR Student Fair
  - 9/9/23 The Buddy Walk
  
- Trainings
  - 7/25/23-7/26/23 NCPMI Practice-Based Coaching
  - 8/22/23 1Care Palliative Care
  - 9/26/23 NEIS Autism Team Training
  
- NEIS Events
  - 8/1/23 NEIS Birthday Party
  - 8/4/23 Popsicles in the Park
  - 9/9/23 Breakfast with a View
  
- New Staff
  - Abby Leckeric, OT
  - Jennifer Main, OT
  - Aamna Ahmad, SLP
  - Jaymielee Defiesta, DS
  - Susan Barnett, DS
  - Veronica Sandoval, Interpreter
  
- Other
  - SI Delayed Services list is gone, we are supporting all referrals coming in.
  - NEIDS will go live in the upcoming month.
  - Northern Nevada therapists are working together to support families across regions.

# Endorsement 101

Brought to you by:

Nevada Association for Infant and Early Childhood  
Mental Health

# Welcome & Learning Objectives

- To get endorsed or not to get endorsed?
- Differentiate between the categories of Endorsement



Nevada Association of Infant and Early Childhood Mental Health supports professionals through training, resources, and advocacy to foster the early relational health of infants, young children, and families...

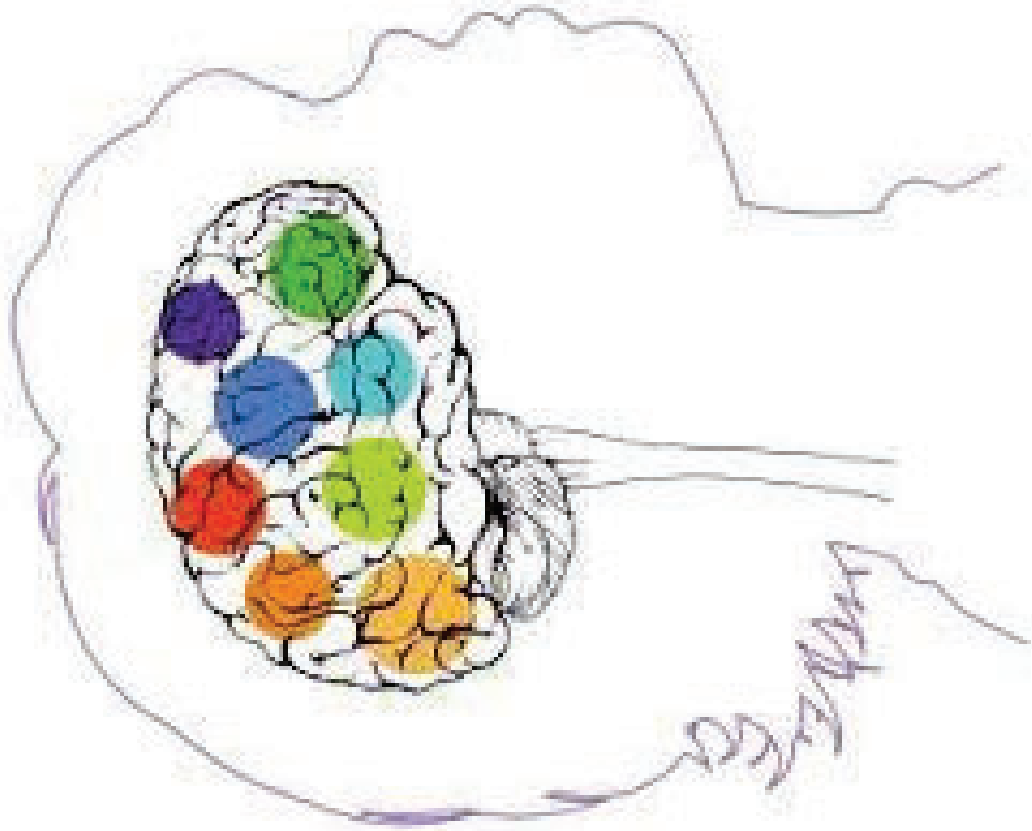






NV-AIECMH Is A  
Multidisciplinary Non-  
Profit Organization For All  
Professionals Who  
Support The  
Development Of Children  
Birth Up To Age 6.

# Brain Development & Relationships





**When you think of infant and  
early childhood mental  
health, what do you think of?**

# Infant and Early Childhood Mental Health

## The foundation of all future development

*Everyone who touches the life of a child can promote social and emotional well-being*

Social and emotional development, or **infant and early childhood mental health**, is the developing capacity of a child from birth to 5 years old to...



Form close and secure  
**adult and peer**  
relationships...



Experience, manage  
and express a **full**  
range of emotions...



**Explore the**  
**environment**  
and learn...

...all in the context of family, community, and culture.

## NV-AIECMH

### **Infant and early childhood mental health services are:**

- Provided within the context of family, community & cultural expectations for young children
- Focused on promoting healthy social and emotional development rather than on psychopathology
- The focus is the caregiver-child relationship, rather than an individual child.



# What is Infant and Early Childhood Mental Health Endorsement®?



Endorsement<sup>®</sup>



Knowing

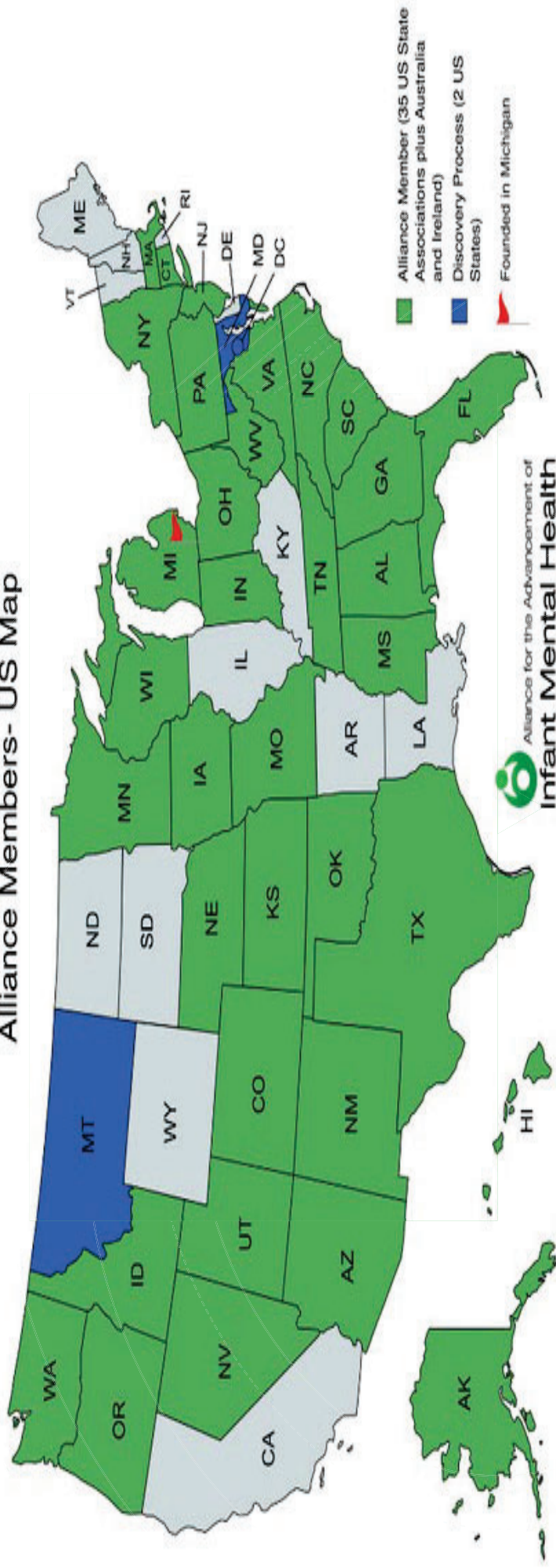


Doing



Being

## Alliance Members- US Map



Endorsement® is used worldwide!



## Infant vs. Early Childhood Endorsement

### **Infant Mental Health(IMH-E®)**

Specializing in work experience with 0-3-year-olds & their families

IMH-E® shows that professionals have attained specific work experience and expertise with prenatal up to 3-year-olds and their families.

### **Early Childhood Mental Health(ECMH-E®)**

Specializing in work experience with 3-6-year-olds & their families

ECMH-E® shows that professionals have attained specific work experience and expertise with 3-6-year-olds and their families.

■ **Promotion**

Infant/Early Childhood Family Associate

■ **Prevention**

Infant/Early Childhood Family Specialist

Infant/Early Childhood Family Reflective Supervisor

■ **Clinical Intervention**

Infant/Early Childhood Mental Health Specialist

■ **Leadership**

Infant/Early Childhood Mental Health Mentor

# Pathways of Endorsement<sup>®</sup>

Align with  
**SCOPE OF  
PRACTICE**

## **Endorsement offers career pathways based on the scope of practice!**

### **Infant/Early Childhood Family Associate (PROMOTION)**

- Early Care & Education
- Case Management
- Child Welfare
- Administration

### **Infant/Early Childhood Family Specialist (PREVENTION/INTERVENTION)**

- Home Visitor (HFA, PAT, NFP, etc.)
- Early Head Start
- Mental Health Consultation
- Part C/Early Intervention

## Infant/Early Childhood Family Reflective Supervisor (PREVENTION)

- Home Visitor (HFA, PAT, NFP, etc.)
- Early Head Start
- Mental Health Consultation
- Part C/Early Intervention
- Receiving and Providing Reflective Supervision

## Infant/Early Childhood Mental Health Specialist (CLINICAL INTERVENTION/TREATMENT)

- Infant and Early Childhood Clinicians

## Infant/Early Childhood Mentor Health Mentor (LEADERSHIP)

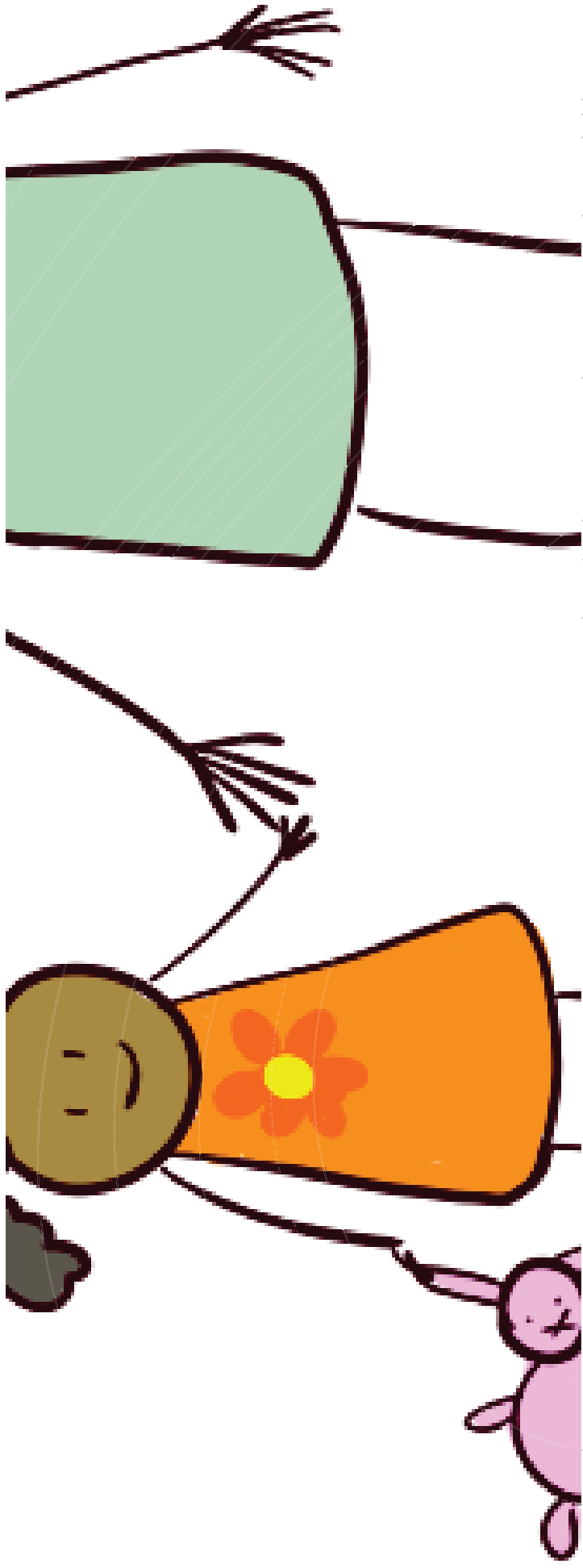
- Clinical
- Research/Faculty
- Policy

# Endorsement Category Requirements

|  | Infant Family Associate  | Infant Family Specialist  | Infant Family Reflective Supervisor   | IMH Specialist   | IMH Mentor - Clinical, Research/Faculty, or Policy                                       |
|--|--|---|---|--|--|
| Scope of Work                                    | PROMOTION  | PREVENTION/EARLY INTERVENTION   | PREVENTION/EARLY INTERVENTION & PROVIDER OF RSC   | CLINICAL INTERVENTION/TREATMENT  | MACRO  |
| Education  | Any academic degree <sup>1</sup>   | No Degree   | No Degree   | Masters, Post-Graduate   | Masters, Post-Graduate   |
| Work Experience                                  | Min. 2 yrs. of infant/early childhood related work experience or volunteer experience in an applicable role <sup>2</sup> | Min. 2 yrs. of prevention and/or early intervention services with 0-36 mo. olds & their caregivers/families; served a min. of 10 families | Min. 2 yrs. of prevention and/or early intervention services with 0-36 mo. olds & their caregivers/families; <b>PLUS</b> provider of RSC for 1+ yr. | Min. 2 yrs. post-masters IMH practice working on behalf of caregiver-infant relationship | Min. 3 yrs. as an IMH practice leader<br><br>Plus provider of RSC for 3+ yrs. (Clinical) |
| In-Service Training                              | Min. 30 hrs.   | Min. 30 hrs.  | Min. 48 hrs.  | Min. 30 hrs.   | Min. 33 hours (Policy & Research/Faculty)<br>Min. 48 hours (Clinical)                    |
| References                                       | 3  | 3   | 3   | 3  | 3  |
| Reflective Supervision with a Qualified Provider | Not required   | Min. 24 hrs. received   | Min. 24 hrs. received; 12 hours about the provision of RSC  | Min 50 hrs. received   | Min. 50 hrs. received; 25 hours about the provision of RSC (Clinical only)               |
| Written Exam                                     | No   | No  | No  | Yes  | Yes  |

<sup>1</sup> Family Associate applicants need to meet the Education OR the Work requirement they do not need to meet both.

<sup>2</sup> For Family Associate applicants, volunteer experience may meet the work criterion if it was a) supervised experience with women during pregnancy or with infants, toddlers, & families AND b) included specialized training. Examples include CASA, Doula, Child Life Specialist.



Why Apply for IMH-E® ?

# Why Endorsement?

It's good for the Professional

It's good for Children and Families

It's good for Communities

It's good for Employers

It's good for the field



## Why is Endorsement® Important to me?



- “I have a better understanding of the importance of this work.”
- “[I am] well-prepared for work with families.”
- “The time spent preparing my application helped increase my understanding of IMH work.”
- “I have gained a greater understanding of my role in supporting the relationships between parents and their children.”
- “Increased the credibility of our center and educators.”
- “Helps childcare providers to see their role as a career, not just a job.”
- “From some of the trainings I received-- a shift in my focus. I had more knowledge about infants and their development, their social-emotional development, infant mental health and attachment.”

Endorsement...I'm interested  
but where do I start?

The graphic features a large green circle containing text, set against a background of light gray curved lines and a dark gray swoosh at the bottom. The text is centered within the green circle.

Nevada Endorsement Kickoff  
Come Grow with Us  
September 6<sup>th</sup> & 7<sup>th</sup>, 2023

To be included in communication on kickoff  
[info@nvaiecmh.org](mailto:info@nvaiecmh.org)

## Come Grow with Us!

Become a member  
Membership Committee  
Endorsement Committee  
Attend a training  
Join the listserve  
Serve on the Board

[info@nvaiecmh.org](mailto:info@nvaiecmh.org)

## Upcoming NV-AIECMH trainings

The Importance of Healthy Relationships & Early Attachment  
On Behalf of Families: The Role of Self-Awareness  
System & Policy Opportunities for IECMH Changemakers

[info@nvaiecmh.org](mailto:info@nvaiecmh.org)

¿  
¿  
¿  
¿  
¿  
¿

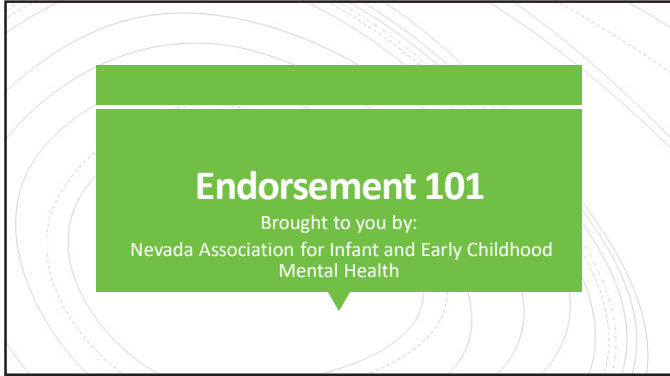


## Your Nevada Endorsement Team:

Dr. Krisann Alvarez, [kalvarez@dcfs.nv.gov](mailto:kalvarez@dcfs.nv.gov)


Ann Polakowski, LCSW, [apolakowski@dcfs.nv.gov](mailto:apolakowski@dcfs.nv.gov)





**Endorsement 101**  
Brought to you by:  
Nevada Association for Infant and Early Childhood  
Mental Health

1



- To get endorsed or not to get endorsed?
- Differentiate between the categories of Endorsement

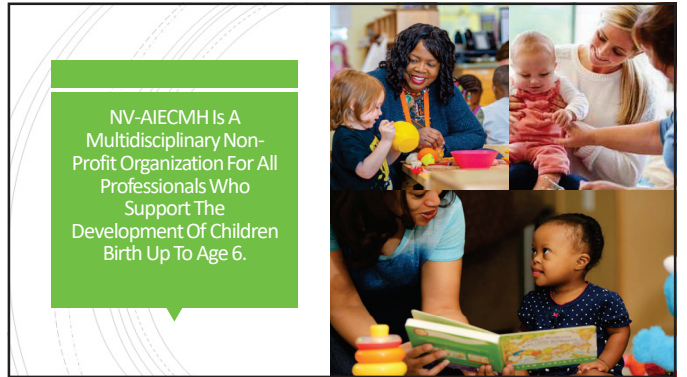
Welcome & Learning Objectives

2



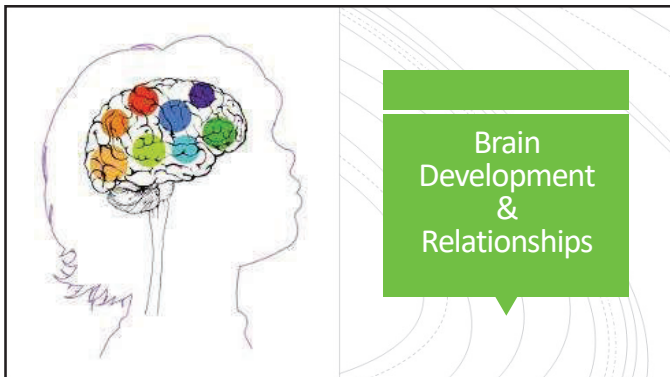
Nevada Association of Infant and Early Childhood Mental Health supports professionals through training, resources, and advocacy to foster the early relational health of infants, young children, and families...

3



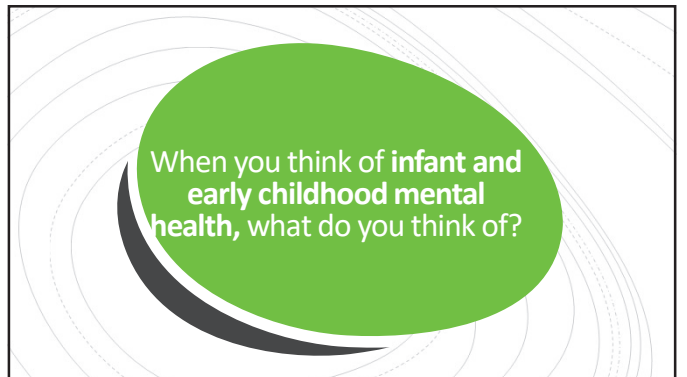
NV-AIECMH is A Multidisciplinary Non-Profit Organization For All Professionals Who Support The Development Of Children Birth Up To Age 6.

4



Brain Development & Relationships

5



When you think of infant and early childhood mental health, what do you think of?

6



## Infant and Early Childhood Mental Health

### The foundation of all future development

Everyone who touches the life of a child can promote social and emotional well-being

Social and emotional development, or **infant and early childhood mental health**, is the developing capacity of a child from birth to 5 years old to...



**Form close and secure adult and peer relationships...**



**Experience, manage and express a full range of emotions...**



**Explore the environment and learn...**

...all in the context of family, community, and culture.

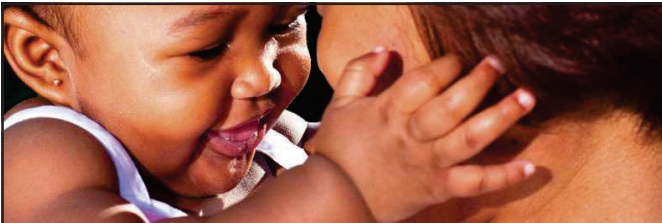
7

### Infant and early childhood mental health services are:

#### NV-AIECMH

- Provided within the context of family, community & cultural expectations for young children
- Focused on promoting healthy social and emotional development rather than on psychopathology
- The focus is the caregiver-child relationship, rather than an individual child.

8



### What is Infant and Early Childhood Mental Health Endorsement®?

9

Endorsement®

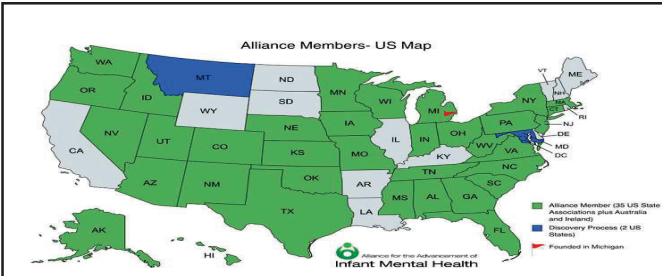
**Knowing**

**Doing**

**Being**

10

#### Alliance Members- US Map



Endorsement® is used worldwide!

11

### Infant vs. Early Childhood Endorsement

**Infant Mental Health(IMH-E®)**

Specializing in work experience with 0-3-year-olds & their families

IMH-E® shows that professionals have attained specific work experience and expertise with prenatal up to 3-year-olds and their families.

**Early Childhood Mental Health(ECMH-E®)**

Specializing in work experience with 3-6-year-olds & their families

ECMH-E® shows that professionals have attained specific work experience and expertise with 3-6-year-olds and their families.

12

**■ Promotion**  
 Infant/Early Childhood Family Associate

**■ Prevention**  
 Infant/Early Childhood Family Specialist  
 Infant/Early Childhood Family Reflective Supervisor

**■ Clinical Intervention**  
 Infant/Early Childhood Mental Health Specialist

**■ Leadership**  
 Infant/Early Childhood Mental Health Mentor

**Pathways of Endorsement**  
 Align with SCOPE OF PRACTICE

13

**Endorsement offers career pathways based on the scope of practice!**

**Infant/Early Childhood Family Associate (PROMOTION)**

- Early Care & Education
- Case Management
- Child Welfare
- Administration

**Infant/Early Childhood Family Specialist (PREVENTION/INTERVENTION)**

- Home Visitor (HFA, PAT, NFP, etc.)
- Early Head Start
- Mental Health Consultation
- Part C/Early Intervention

14

**Infant/Early Childhood Family Reflective Supervisor (PREVENTION)**

- Home Visitor (HFA, PAT, NFP, etc.)
- Early Head Start
- Mental Health Consultation
- Part C/Early Intervention
- Receiving and Providing Reflective Supervision

**Infant/Early Childhood Mental Health Specialist (CLINICAL INTERVENTION/TREATMENT)**

- Infant and Early Childhood Clinicians

15

**Infant/Early Childhood Mentor Health Mentor (LEADERSHIP)**

- Clinical
- Research/Faculty
- Policy

16

**Endorsement Category Requirements**

| Scope of Work                                    | Infant Family Associate   | Infant Family Specialist   | Infant Family Reflective Supervisor  | IMH Specialist  | IMH Mentor - Clinical, Research/Faculty, or Policy                                   |
|--|---|--|--|---|--|
| Education  | PROMOTION   | PREVENTION/ EARLY INTERVENTION   | PREVENTION/ EARLY INTERVENTION & PROVIDER OF BSC   | CLINICAL INTERVENTION/ TREATMENT  | MISC00   |
| Education  | Any academic degree <sup>1</sup>  | No Degree  | No Degree  | Masters, Post-Graduate  | Masters, Post-Graduate   |
| Work Experience                                  | Min. 1 yr. of infant/early childhood related work experience or volunteer experience in an applicable area <sup>2</sup> | Min. 2 yrs. of prevention and/or early intervention services with 0-30 min. visits & their caregivers/families, served a min. of 10 families | Min. 2 yrs. of prevention and/or early intervention services with 0-30 min. visits & their caregivers/families, served a min. of 10 families | Min. 2 yrs. post-master's thesis that practice working on behalf of caregiver-client relationship for 1 yr. | Min. 3 yrs. as an IMH practice leader<br>Plus provider of BSC for 3+ yrs. (Clinical) |
| In-Service Training                              | Min. 30 hrs.  | Min. 30 hrs.   | Min. 48 hrs.   | Min. 30 hrs.  | Min. 33 hours Policy & Research/Faculty<br>Min. 48 hours (Clinical)                  |
| References                                       | 3   | 3  | 3  | 3   | 3  |
| Reflective Supervision with a Qualified Provider | Not required  | Min. 24 hrs. received  | Min. 24 hrs. received, 12 hours about the provision of BSC   | Min. 50 hrs. received   | Min. 50 hrs. received, 25 hours about the provision of BSC (Clinical only)           |
| Written Exam                                     | No  | No   | No   | Yes   | Yes  |

1 Family Associate applicants need to meet the Education OR the Work requirement they do not need to meet both.  
 2 For Family Associate applicants, volunteer experience may meet the work criterion if it was of supervised experience with women during pregnancy or with infants, toddlers, & families AND it included specialized training. Examples include: CASA, Doula, Child Life Specialist.

17

**Why Apply for IMH-E®?**

18

**Why Endorsement?**

- It's good for the Professional
- It's good for Children and Families
- It's good for Communities
- It's good for Employers
- It's good for the field

19

**Why is Endorsement® Important to me?**



- "I have a better understanding of the importance of this work."
- "Increased the credibility of our center and educators."
- "[I am] well-prepared for work with families."
- "Helps childcare providers to see their role as a career, not just a job."
- "The time spent preparing my application helped increase my understanding of IMH work."
- "From some of the trainings I received--a shift in my focus. I had more knowledge about infants and their development, their social-emotional development, infant mental health and attachment."
- "I have gained a greater understanding of my role in supporting the relationships between parents and their children."

20

**Endorsement...I'm interested but where do I start?**

21

**Nevada Endorsement Kickoff**  
**Come Grow with Us**  
 September 6<sup>th</sup> & 7<sup>th</sup>, 2023

To be included in communication on kickoff  
[info@nvaiecmh.org](mailto:info@nvaiecmh.org)

22

**Come Grow with Us!**

- Become a member
- Membership Committee
- Endorsement Committee
- Attend a training
- Join the listserv
- Serve on the Board

[info@nvaiecmh.org](mailto:info@nvaiecmh.org)

23

**Upcoming NV-AIECMH trainings**

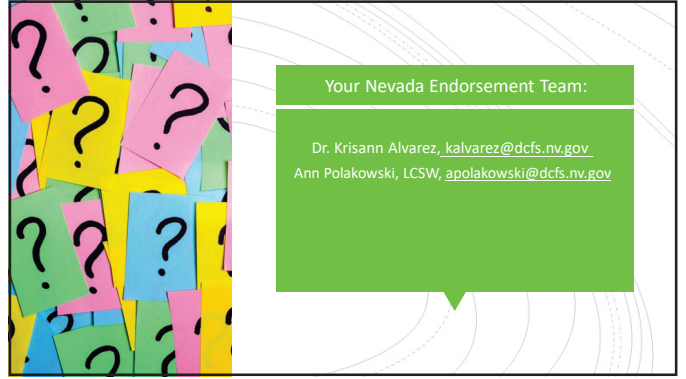
- The Importance of Healthy Relationships & Early Attachment
- On Behalf of Families: The Role of Self-Awareness
- System & Policy Opportunities for IECMH Changemakers

[info@nvaiecmh.org](mailto:info@nvaiecmh.org)

24



25



Your Nevada Endorsement Team:

Dr. Krisann Alvarez, [kalvarez@dcsf.nv.gov](mailto:kalvarez@dcsf.nv.gov)  
Ann Polakowski, LCSW, [apolakowski@dcsf.nv.gov](mailto:apolakowski@dcsf.nv.gov)

26

**COMPLAINT INVESTIGATION LOG**

| Program             | Issue  | Complaint Number | Date Filed | 60 day Timeline | Child Resolution | System Resolution  | Complaint Closed | System Resolution |
|---------------------|--|------------------|------------|-----------------|------------------|--|------------------|-------------------|
| NEIS NE             | Failure to provide PT in the natural environment | 202203           | 11/15/22   | 1/14/2023       |                  | Investigation completed 02/23/23. Program working on corrections per plan. |                  |                   |
| NEIS Rural/Frontier | Failure to provide timely speech services        | 202401           | 10/2/23    | 12/1/2023       |                  |  |                  |                   |
|                     |  |                  |            |                 |                  |  |                  |                   |
|                     |  |                  |            |                 |                  |  |                  |                   |
|                     |  |                  |            |                 |                  |  |                  |                   |

Statewide Early Intervention Performance Data

|  | Preliminary |              | Preliminary |              | Preliminary |              | Preliminary |                | FY23 Unduplicated Total |              |
|--|-------------|--------------|-------------|--------------|-------------|--------------|-------------|----------------|-------------------------|--------------|
|  | Count       | Percentage   | Count       | Percentage   | Count       | Percentage   | Count       | Percentage     | Count                   | Percentage   |
| <b>TOTAL INDIVIDUAL FAMILY SERVICE PLANS (IFSP)</b>            | <b>0</b>    |              | <b>0</b>    |              | <b>0</b>    |              | <b>0</b>    |                | <b>0</b>                |              |
| NEIS-South   |             | #DIV/0!      |             | #DIV/0!      |             | #DIV/0!      |             | #DIV/0!        |                         | #DIV/0!      |
| NEIS-Northwest   |             | #DIV/0!      |             | #DIV/0!      |             | #DIV/0!      |             | #DIV/0!        |                         | #DIV/0!      |
| NEIS-Northeast   |             | #DIV/0!      |             | #DIV/0!      |             | #DIV/0!      |             | #DIV/0!        |                         | #DIV/0!      |
| NEIS-Carson City   |             | #DIV/0!      |             | #DIV/0!      |             | #DIV/0!      |             | #DIV/0!        |                         | #DIV/0!      |
| Capability Health and Human Services-South                     |             | #DIV/0!      |             | #DIV/0!      |             | #DIV/0!      |             | #DIV/0!        |                         | #DIV/0!      |
| TMG  |             | #DIV/0!      |             | #DIV/0!      |             | #DIV/0!      |             | #DIV/0!        |                         | #DIV/0!      |
| Positively Kids  |             | #DIV/0!      |             | #DIV/0!      |             | #DIV/0!      |             | #DIV/0!        |                         | #DIV/0!      |
| The Continuum  |             | #DIV/0!      |             | #DIV/0!      |             | #DIV/0!      |             | #DIV/0!        |                         | #DIV/0!      |
| Advanced Pediatric Therapies                                   |             | #DIV/0!      |             | #DIV/0!      |             | #DIV/0!      |             | #DIV/0!        |                         | #DIV/0!      |
| Capability Health and Human Services-North                     |             | #DIV/0!      |             | #DIV/0!      |             | #DIV/0!      |             | #DIV/0!        |                         | #DIV/0!      |
| TMG North  |             | #DIV/0!      |             | #DIV/0!      |             | #DIV/0!      |             | #DIV/0!        |                         | #DIV/0!      |
| MD Developmental Agency  |             | #DIV/0!      |             | #DIV/0!      |             | #DIV/0!      |             | #DIV/0!        |                         | #DIV/0!      |
| Theraplay Solutions  |             | #DIV/0!      |             | #DIV/0!      |             | #DIV/0!      |             | #DIV/0!        |                         | #DIV/0!      |
| <b>TOTAL NEW IFSPs</b>   | <b>900</b>  |              | <b>829</b>  |              | <b>1042</b> |              | <b>0</b>    |                | <b>2771</b>             |              |
| NEIS-South   | 210         | 23.3%        | 219         | 26.4%        | 227         | 21.8%        |             | 0.0%           | 656                     | 23.7%        |
| NEIS-Northwest   | 93          | 10.3%        | 102         | 12.3%        | 101         | 9.7%         |             | 0.0%           | 296                     | 10.7%        |
| NEIS-Northeast   | 36          | 4.0%         | 36          | 4.3%         | 37          | 3.6%         |             | 0.0%           | 109                     | 3.9%         |
| NEIS-Carson City   | 52          | 5.8%         | 50          | 6.0%         | 54          | 5.2%         |             | 0.0%           | 146                     | 5.3%         |
| Capability Health and Human Services-South                     | 130         | 14.4%        | 159         | 19.2%        | 198         | 19.0%        |             | 0.0%           | 487                     | 17.6%        |
| TMG  | 130         | 14.4%        | 134         | 16.2%        | 138         | 13.2%        |             | 0.0%           | 402                     | 14.5%        |
| Positively Kids  | 60          | 6.7%         | 52          | 6.3%         | 52          | 5.0%         |             | 0.0%           | 164                     | 5.9%         |
| The Continuum  | 42          | 4.7%         | 1           | 0.1%         |             | 0.0%         |             | 0.0%           | 43                      | 1.6%         |
| Advanced Pediatric Therapies                                   | 53          | 5.9%         | 38          | 4.6%         | 59          | 5.7%         |             | 0.0%           | 150                     | 5.4%         |
| Capability Health and Human Services-North                     | 9           | 1.0%         | 17          | 2.1%         | 18          | 1.7%         |             | 0.0%           | 44                      | 1.6%         |
| TMG North  | 28          | 3.1%         | 30          | 3.6%         | 36          | 3.5%         |             | 0.0%           | 94                      | 3.4%         |
| MD Developmental Agency  | 57          | 6.3%         | 1           | 0.1%         | 45          | 4.3%         |             | 0.0%           | 103                     | 3.7%         |
| Theraplay Solutions  |             | 0.0%         |             | 0.0%         | 77          | 7.4%         |             | 0.0%           | 77                      | 2.8%         |
| <b>Number of New IFSPs in place within the 45 day timeline</b> | <b>676</b>  | <b>75.1%</b> | <b>575</b>  | <b>69.4%</b> | <b>771</b>  | <b>74.0%</b> | <b>0</b>    | <b>#DIV/0!</b> | <b>2022</b>             | <b>73.0%</b> |
| NEIS-South   | 163         | 18.11%       | 162         | 19.54%       | 145         | 13.92%       |             | #DIV/0!        | 470                     | 17.0%        |
| NEIS-Northwest   | 56          | 6.22%        | 71          | 8.56%        | 68          | 6.53%        |             | #DIV/0!        | 195                     | 7.0%         |
| NEIS-Northeast   | 24          | 2.67%        | 26          | 3.14%        | 33          | 3.17%        |             | #DIV/0!        | 83                      | 3.0%         |
| NEIS-Carson City   | 28          | 3.11%        | 11          | 1.33%        | 20          | 1.92%        |             | #DIV/0!        | 59                      | 2.1%         |
| Capability Health and Human Services-South                     | 114         | 12.67%       | 121         | 14.60%       | 158         | 15.16%       |             | #DIV/0!        | 393                     | 14.2%        |
| TMG  | 106         | 11.78%       | 104         | 12.55%       | 105         | 10.08%       |             | #DIV/0!        | 315                     | 11.4%        |
| Positively Kids  | 54          | 6.00%        | 16          | 1.93%        | 36          | 3.45%        |             | #DIV/0!        | 106                     | 3.8%         |
| The Continuum  | 35          | 3.89%        | 0           | 0.00%        | 0           | 0.00%        |             | #DIV/0!        | 35                      | 1.3%         |
| Advanced Pediatric Therapies                                   | 41          | 4.56%        | 28          | 3.38%        | 44          | 4.22%        |             | #DIV/0!        | 113                     | 4.1%         |
| Capability Health and Human Services-North                     | 5           | 0.56%        | 10          | 1.21%        | 15          | 1.44%        |             | #DIV/0!        | 30                      | 1.1%         |
| TMG North  | 23          | 2.56%        | 25          | 3.02%        | 30          | 2.88%        |             | #DIV/0!        | 78                      | 2.8%         |
| MD Developmental Agency  | 27          | 3.00%        | 1           | 0.12%        | 40          | 3.84%        |             | #DIV/0!        | 68                      | 2.5%         |
| Theraplay Solutions  | 0           | 0.00%        | 0           | 0.00%        | 77          | 7.39%        |             | #DIV/0!        | 77                      | 2.8%         |

Statewide Early Intervention Performance Data

|  | Preliminary |              | Preliminary |              | Preliminary |              | Preliminary |                | Preliminary |              | FY23 Unduplicated Total |              |
|--|-------------|--------------|-------------|--------------|-------------|--------------|-------------|----------------|-------------|--------------|-------------------------|--------------|
|  | Count       | Percentage   | Count       | Percentage   | Count       | Percentage   | Count       | Percentage     | Count       | Percentage   | Count                   | Percentage   |
| <b>Number of New IFSPs in place beyond the 45 day timeline</b>                           | <b>224</b>  | <b>24.9%</b> | <b>254</b>  | <b>30.6%</b> | <b>271</b>  | <b>26.0%</b> | <b>0</b>    | <b>#DIV/0!</b> | <b>749</b>  | <b>25.8%</b> | <b>749</b>              | <b>25.8%</b> |
| NEIS-South   | 47          | 5.2%         | 57          | 6.9%         | 82          | 7.9%         |             | #DIV/0!        | 186         | 6.7%         | 186                     | 6.7%         |
| NEIS-Northwest   | 37          | 4.1%         | 31          | 3.7%         | 33          | 3.2%         |             | #DIV/0!        | 101         | 3.6%         | 101                     | 3.6%         |
| NEIS-Northeast   | 12          | 1.3%         | 10          | 1.2%         | 4           | 0.4%         |             | #DIV/0!        | 26          | 0.9%         | 26                      | 0.9%         |
| NEIS-Carson City   | 24          | 2.7%         | 29          | 3.5%         | 34          | 3.3%         |             | #DIV/0!        | 87          | 3.1%         | 87                      | 3.1%         |
| Capability Health and Human Services-South   | 16          | 1.8%         | 38          | 4.6%         | 40          | 3.8%         |             | #DIV/0!        | 94          | 3.4%         | 94                      | 3.4%         |
| TMG  | 24          | 2.7%         | 30          | 3.6%         | 33          | 3.2%         |             | #DIV/0!        | 87          | 3.1%         | 87                      | 3.1%         |
| Positively Kids  | 6           | 0.7%         | 36          | 4.3%         | 16          | 1.5%         |             | #DIV/0!        | 58          | 2.1%         | 58                      | 2.1%         |
| The Continuum  | 7           | 0.8%         | 1           | 0.1%         |             | 0.0%         |             | #DIV/0!        | 8           | 0.3%         | 8                       | 0.3%         |
| Advanced Pediatric Therapies   | 12          | 1.3%         | 10          | 1.2%         | 15          | 1.4%         |             | #DIV/0!        | 37          | 1.3%         | 37                      | 1.3%         |
| Capability Health and Human Services-North   | 4           | 0.4%         | 7           | 0.8%         | 3           | 0.3%         |             | #DIV/0!        | 14          | 0.5%         | 14                      | 0.5%         |
| TMG North  | 5           | 0.6%         | 5           | 0.6%         | 6           | 0.6%         |             | #DIV/0!        | 16          | 0.6%         | 16                      | 0.6%         |
| IMD Developmental Agency-  | 30          | 3.3%         | 0           | 0.0%         | 5           | 0.5%         |             | #DIV/0!        | 35          | 1.3%         | 35                      | 1.3%         |
| Theraplay Solutions  |             | 0.0%         |             | 0.0%         | 0           | 0.0%         |             | #DIV/0!        | 0           | 0.0%         | 0                       | 0.0%         |
| <b>Documented exceptions to IFSPs not in place by the 45 day timeline</b>                | <b>201</b>  |              | <b>207</b>  |              | <b>233</b>  |              | <b>0</b>    |                | <b>641</b>  |              | <b>641</b>              |              |
| NEIS-South   | 47          | 5.2%         | 52          | 6.3%         | 73          | 7.0%         |             | #DIV/0!        | 172         | 6.2%         | 172                     | 6.2%         |
| NEIS-Northwest   | 28          | 3.1%         | 30          | 3.6%         | 28          | 2.7%         |             | #DIV/0!        | 86          | 3.1%         | 86                      | 3.1%         |
| NEIS-Northeast   | 12          | 1.3%         | 8           | 1.0%         | 4           | 0.4%         |             | #DIV/0!        | 24          | 0.9%         | 24                      | 0.9%         |
| NEIS-Carson City   | 24          | 2.7%         | 26          | 3.1%         | 32          | 3.1%         |             | #DIV/0!        | 82          | 3.0%         | 82                      | 3.0%         |
| Capability Health and Human Services-South   | 15          | 1.7%         | 32          | 3.9%         | 33          | 3.2%         |             | #DIV/0!        | 80          | 2.9%         | 80                      | 2.9%         |
| TMG  | 23          | 2.6%         | 30          | 3.6%         | 30          | 2.9%         |             | #DIV/0!        | 83          | 3.0%         | 83                      | 3.0%         |
| Positively Kids  | 5           | 0.6%         | 7           | 0.8%         | 6           | 0.6%         |             | #DIV/0!        | 18          | 0.6%         | 18                      | 0.6%         |
| The Continuum  | 6           | 0.7%         | 1           | 0.1%         |             | 0.0%         |             | #DIV/0!        | 7           | 0.3%         | 7                       | 0.3%         |
| Advanced Pediatric Therapies   | 11          | 1.2%         | 9           | 1.1%         | 14          | 1.3%         |             | #DIV/0!        | 34          | 1.2%         | 34                      | 1.2%         |
| Capability Health and Human Services-North   | 4           | 0.4%         | 7           | 0.8%         | 2           | 0.2%         |             | #DIV/0!        | 13          | 0.5%         | 13                      | 0.5%         |
| TMG North  | 5           | 0.6%         | 5           | 0.6%         | 6           | 0.6%         |             | #DIV/0!        | 16          | 0.6%         | 16                      | 0.6%         |
| IMD Developmental Agency   | 21          | 2.3%         | 0           | 0.0%         | 5           | 0.5%         |             | #DIV/0!        | 26          | 0.9%         | 26                      | 0.9%         |
| Theraplay Solutions  |             | 0.0%         |             | 0.0%         |             | 0.0%         |             | #DIV/0!        | 0           | 0.0%         | 0                       | 0.0%         |
| <b>Total Number of New IFSPs over/under the 45 day timeline adjusting for exceptions</b> |             |              |             |              |             |              |             |                |             |              |                         |              |
| Statewide <45 Days   | 877         | 97.4%        | 782         | 94.3%        | 1004        | 96.4%        | 0           | #DIV/0!        | 2663        | 96.1%        | 2663                    | 96.1%        |
| Statewide >45 Days   | 23          | 2.6%         | 47          | 5.7%         | 38          | 3.6%         | 0           | #DIV/0!        | 108         | 3.9%         | 108                     | 3.9%         |
| Total  | 900         |              | 829         |              | 1042        |              | 0           |                | 2771        |              | 2771                    |              |
| NEIS-South <45 Days  | 210         | 100.0%       | 214         | 97.7%        | 218         | 96.0%        | 0           | #DIV/0!        | 642         | 97.9%        | 642                     | 97.9%        |
| NEIS-South >45 Days  | 0           | 0.0%         | 5           | 2.3%         | 9           | 4.0%         | 0           | #DIV/0!        | 14          | 2.1%         | 14                      | 2.1%         |
| Total  | 210         |              | 219         |              | 227         |              | 0           |                | 656         |              | 656                     |              |
| NEIS-Northwest <45 Days  | 84          | 90.3%        | 101         | 99.0%        | 96          | 95.0%        | 0           | #DIV/0!        | 281         | 94.9%        | 281                     | 94.9%        |
| NEIS-Northwest >45 Days  | 9           | 9.7%         | 1           | 1.0%         | 5           | 5.0%         | 0           | #DIV/0!        | 15          | 5.1%         | 15                      | 5.1%         |
| Total  | 93          |              | 102         |              | 101         |              | 0           |                | 296         |              | 296                     |              |
| NEIS-Northeast <45 Days  | 36          | 100.0%       | 34          | 94.4%        | 37          | 100.0%       | 0           | #DIV/0!        | 107         | 98.2%        | 107                     | 98.2%        |
| NEIS-Northeast >45 Days  | 0           | 0.0%         | 2           | 5.6%         | 0           | 0.0%         | 0           | #DIV/0!        | 2           | 1.8%         | 2                       | 1.8%         |
| Total  | 36          |              | 36          |              | 37          |              | 0           |                | 109         |              | 109                     |              |
| NEIS-Carson City <45 Days  | 52          | 100.0%       | 37          | 92.5%        | 52          | 96.3%        | 0           | #DIV/0!        | 141         | 96.6%        | 141                     | 96.6%        |
| NEIS-Carson City >45 Days  | 0           | 0.0%         | 3           | 7.5%         | 2           | 3.7%         | 0           | #DIV/0!        | 5           | 3.4%         | 5                       | 3.4%         |
| Total  | 52          |              | 40          |              | 54          |              | 0           |                | 146         |              | 146                     |              |
| Capability Health and Human Services-South <45 Days                                      | 129         | 99.2%        | 153         | 96.2%        | 191         | 96.5%        | 0           | #DIV/0!        | 473         | 97.1%        | 473                     | 97.1%        |
| Capability Health and Human Services-South >45 Days                                      | 1           | 0.8%         | 6           | 3.8%         | 7           | 3.5%         | 0           | #DIV/0!        | 14          | 2.9%         | 14                      | 2.9%         |
| Total  | 130         |              | 159         |              | 198         |              | 0           |                | 487         |              | 487                     |              |
| TMG <45 Days   | 129         | 99.2%        | 134         | 100.0%       | 135         | 97.8%        | 0           | #DIV/0!        | 398         | 99%          | 398                     | 99%          |
| TMG >45 Days   | 1           | 0.8%         | 0           | 0.0%         | 3           | 2.2%         | 0           | #DIV/0!        | 4           | 1%           | 4                       | 1%           |
| Total  | 130         |              | 134         |              | 138         |              | 0           |                | 402         |              | 402                     |              |
| Positively Kids <45 Days   | 59          | 98.3%        | 23          | 44.2%        | 42          | 80.8%        | 0           | #DIV/0!        | 124         | 75.61%       | 124                     | 75.61%       |
| Positively Kids >45 Days   | 1           | 1.7%         | 29          | 55.8%        | 10          | 19.2%        | 0           | #DIV/0!        | 40          | 24.39%       | 40                      | 24.39%       |

Statewide Early Intervention Performance Data

|  | Preliminary |            | Preliminary |            | Preliminary |            | Preliminary |            | FY23 Unduplicated Total |            |
|--|-------------|------------|-------------|------------|-------------|------------|-------------|------------|-------------------------|------------|
|  | Count       | Percentage | Count       | Percentage | Count       | Percentage | Count       | Percentage | Count                   | Percentage |
| Total  | 60          |            | 52          |            | 52          |            | 0           |            | 164                     |            |
| The Continuum <45 Days                             | 41          | 97.6%      | 1           | 100.0%     | 0           | #DIV/0!    | 0           | #DIV/0!    | 42                      | 97.67%     |
| The Continuum >45 Days                             | 1           | 2.4%       | 0           | 0.0%       | 0           | #DIV/0!    | 0           | #DIV/0!    | 1                       | 2.33%      |
| Total  | 42          |            | 1           |            | 0           |            | 0           |            | 43                      |            |
| Advanced Pediatric Therapies <45 Days              | 52          | 98.1%      | 37          | 97.4%      | 58          | 98.3%      | 0           | #DIV/0!    | 147                     | 98.0%      |
| Advanced Pediatric Therapies >45 Days              | 1           | 1.9%       | 1           | 2.6%       | 1           | 1.7%       | 0           | #DIV/0!    | 3                       | 2.0%       |
| Total  | 53          |            | 38          |            | 59          |            | 0           |            | 150                     |            |
| Capbility Health and Human Services-North <45 Days | 9           | 100.0%     | 17          | 100.0%     | 17          | 94.4%      | 0           | #DIV/0!    | 43                      | 97.7%      |
| Capbility Health and Human Services-North >45 Days | 0           | 0.0%       | 0           | 0.0%       | 1           | 5.6%       | 0           | #DIV/0!    | 1                       | 2.3%       |
| Total  | 9           |            | 17          |            | 18          |            | 0           |            | 44                      |            |
| TMG North  | 28          | 100.0%     | 30          | 100.0%     | 36          | 100.0%     | 0           | #DIV/0!    | 94                      | 100.0%     |
| TMG North  | 0           | 0.0%       | 0           | 0.0%       | 0           | 0.0%       | 0           | #DIV/0!    | 0                       | 0.0%       |
| Total  | 28          |            | 30          |            | 36          |            | 0           |            | 94                      |            |
| MD Developmental Agency <45 Days                   | 48          | 84.2%      | 1           | 100.0%     | 45          | 100.0%     | 0           | #DIV/0!    | 94                      | 91.3%      |
| MD Developmental Agency >45 Days                   | 9           | 15.8%      | 0           | 0.0%       | 0           | 0.0%       | 0           | #DIV/0!    | 9                       | 8.7%       |
| Total  | 57          |            | 1           |            | 45          |            | 0           |            | 103                     |            |
| Theraplay Solutions <45 Days                       | 0           | #DIV/0!    | 0           | #DIV/0!    | 77          | 100.0%     | 0           | #DIV/0!    | 77                      | 100.0%     |
| Theraplay Solutions >45 Days                       | 0           | #DIV/0!    | 0           | #DIV/0!    | 0           | 0.0%       | 0           | #DIV/0!    | 0                       | 0.0%       |
| Total  | 0           |            | 0           |            | 77          |            | 0           |            | 77                      |            |



Statewide Early Intervention Performance Data

|  | Preliminary |               | Preliminary |              | Preliminary |              | Preliminary |                | Preliminary |            | FY23 Unduplicated Total |              |
|--|-------------|---------------|-------------|--------------|-------------|--------------|-------------|----------------|-------------|------------|-------------------------|--------------|
|  | Count       | Percentage    | Count       | Percentage   | Count       | Percentage   | Count       | Percentage     | Count       | Percentage | Count                   | Percentage   |
| <b>Number of children exiting on third birthday with exit code of Part B or Part B Eligibility not Determined*</b> | <b>435</b>  |               | <b>475</b>  |              | <b>388</b>  |              | <b>0</b>    |                | <b>1298</b> |            |                         |              |
| NEIS-South   | 82          | 18.9%         | 84          | 17.7%        | 83          | 21.4%        |             | #DIV/0!        | 249         |            |                         | 19.2%        |
| NEIS-Northwest   | 41          | 9.4%          | 38          | 8.0%         | 40          | 10.3%        |             | #DIV/0!        | 119         |            |                         | 9.2%         |
| NEIS-Northeast   | 15          | 3.4%          | 21          | 4.4%         | 23          | 5.9%         |             | #DIV/0!        | 59          |            |                         | 4.5%         |
| NEIS-Carson City   | 20          | 4.6%          | 16          | 3.4%         | 11          | 2.8%         |             | #DIV/0!        | 47          |            |                         | 3.6%         |
| Capability Health and Human Services-South   | 96          | 22.1%         | 107         | 22.5%        | 67          | 17.3%        |             | #DIV/0!        | 270         |            |                         | 20.8%        |
| TMG  | 58          | 13.3%         | 66          | 13.9%        | 78          | 20.1%        |             | #DIV/0!        | 202         |            |                         | 15.6%        |
| Positively Kids  | 42          | 9.7%          | 38          | 8.0%         | 27          | 7.0%         |             | #DIV/0!        | 107         |            |                         | 8.2%         |
| The Continuum  | 19          | 4.4%          | 18          | 3.8%         |             | 0.0%         |             | #DIV/0!        | 37          |            |                         | 2.9%         |
| Advanced Pediatric Therapies   | 21          | 4.8%          | 27          | 5.7%         | 16          | 4.1%         |             | #DIV/0!        | 64          |            |                         | 4.9%         |
| Capability Health and Human Services-North   | 4           | 0.9%          | 7           | 1.5%         | 12          | 3.1%         |             | #DIV/0!        | 23          |            |                         | 1.8%         |
| TMG North  | 14          | 3.2%          | 10          | 2.1%         | 9           | 2.3%         |             | #DIV/0!        | 33          |            |                         | 2.5%         |
| MD Developmental Agency  | 23          | 5.3%          | 43          | 9.1%         | 22          | 5.7%         |             | #DIV/0!        | 88          |            |                         | 6.8%         |
| Theraplay Solutions  |             | 0.0%          |             | 0.0%         |             | 0.0%         |             | #DIV/0!        | 0           |            |                         | 0.0%         |
| <b>Number of children who received their transition meeting within the appropriate timeline</b>                    | <b>364</b>  | <b>83.68%</b> | <b>390</b>  | <b>74.5%</b> | <b>330</b>  | <b>80.2%</b> | <b>0</b>    | <b>#DIV/0!</b> | <b>1084</b> |            |                         | <b>83.5%</b> |
| NEIS-South   | 68          | 15.6%         | 66          | 13.9%        | 74          | 19.1%        |             | #DIV/0!        | 208         |            |                         | 16.0%        |
| NEIS-Northwest   | 33          | 7.6%          | 27          | 5.7%         | 26          | 6.7%         |             | #DIV/0!        | 86          |            |                         | 6.6%         |
| NEIS-Northeast   | 12          | 2.6%          | 12          | 2.5%         | 17          | 4.4%         |             | #DIV/0!        | 41          |            |                         | 3.2%         |
| NEIS-Carson City   | 14          | 3.2%          | 11          | 2.3%         | 10          | 2.6%         |             | #DIV/0!        | 35          |            |                         | 2.7%         |
| Capability Health and Human Services-South   | 80          | 18.4%         | 91          | 19.2%        | 60          | 15.5%        |             | #DIV/0!        | 231         |            |                         | 17.8%        |
| TMG  | 55          | 12.6%         | 61          | 12.8%        | 72          | 18.6%        |             | #DIV/0!        | 188         |            |                         | 14.5%        |
| Positively Kids  | 39          | 9.0%          | 38          | 8.0%         | 26          | 6.7%         |             | #DIV/0!        | 103         |            |                         | 7.9%         |
| The Continuum  | 13          | 3.0%          | 12          | 2.5%         | 0           | 0.0%         |             | #DIV/0!        | 25          |            |                         | 1.9%         |
| Advanced Pediatric Therapies   | 18          | 4.1%          | 24          | 5.1%         | 11          | 2.8%         |             | #DIV/0!        | 53          |            |                         | 4.1%         |
| Capability Health and Human Services-North   | 2           | 0.5%          | 2           | 0.4%         | 8           | 2.1%         |             | #DIV/0!        | 12          |            |                         | 0.9%         |
| TMG North  | 13          | 3.0%          | 10          | 2.1%         | 7           | 1.8%         |             | #DIV/0!        | 30          |            |                         | 2.3%         |
| MD Developmental Agency  | 17          | 3.9%          | 36          | 7.6%         | 19          | 4.9%         |             | #DIV/0!        | 72          |            |                         | 5.5%         |
| Theraplay Solutions  | 0           | 0.0%          | 0           | 0.0%         | 0           | 0.0%         |             | #DIV/0!        | 0           |            |                         | 0.0%         |
| <b>Number of children who did not receive their transition meeting within the appropriate timeline</b>             | <b>71</b>   | <b>14.94%</b> | <b>85</b>   | <b>16.4%</b> | <b>58</b>   | <b>14.2%</b> | <b>0</b>    | <b>#DIV/0!</b> | <b>214</b>  |            |                         | <b>16.5%</b> |
| NEIS-South   | 14          | 3.2%          | 18          | 3.8%         | 9           | 2.3%         |             | #DIV/0!        | 41          |            |                         | 3.2%         |
| NEIS-Northwest   | 8           | 1.8%          | 11          | 2.3%         | 14          | 3.6%         |             | #DIV/0!        | 33          |            |                         | 2.5%         |
| NEIS-Northeast   | 3           | 0.7%          | 9           | 1.9%         | 6           | 1.5%         |             | #DIV/0!        | 18          |            |                         | 1.4%         |
| NEIS-Carson City   | 6           | 1.4%          | 5           | 1.1%         | 1           | 0.3%         |             | #DIV/0!        | 12          |            |                         | 0.9%         |
| Capability Health and Human Services-South   | 16          | 3.7%          | 16          | 3.4%         | 7           | 1.8%         |             | #DIV/0!        | 39          |            |                         | 3.0%         |
| TMG  | 3           | 0.7%          | 5           | 1.1%         | 6           | 1.5%         |             | #DIV/0!        | 14          |            |                         | 1.1%         |
| Positively Kids  | 3           | 0.7%          | 0           | 0.0%         | 1           | 0.3%         |             | #DIV/0!        | 4           |            |                         | 0.3%         |
| The Continuum  | 6           | 1.4%          | 6           | 1.3%         |             | 0.0%         |             | #DIV/0!        | 12          |            |                         | 0.9%         |
| Advanced Pediatric Therapies   | 3           | 0.7%          | 3           | 0.6%         | 5           | 1.3%         |             | #DIV/0!        | 11          |            |                         | 0.8%         |
| Capability Health and Human Services-North   | 2           | 0.5%          | 5           | 1.1%         | 4           | 1.0%         |             | #DIV/0!        | 11          |            |                         | 0.8%         |
| TMG North  | 1           | 0.2%          | 0           | 0.0%         | 2           | 0.5%         |             | #DIV/0!        | 3           |            |                         | 0.2%         |
| MD Developmental Agency  | 6           | 1.4%          | 7           | 1.5%         | 3           | 0.8%         |             | #DIV/0!        | 16          |            |                         | 1.2%         |
| Theraplay Solutions  |             | 0.0%          |             | 0.0%         |             | 0.0%         |             | #DIV/0!        | 0           |            |                         | 0.0%         |

Statewide Early Intervention Performance Data

|  | Preliminary |            | Preliminary |            | Preliminary |            | Preliminary |            | FY23 Unduplicated Total |            |
|--|-------------|------------|-------------|------------|-------------|------------|-------------|------------|-------------------------|------------|
|  | Count       | Percentage | Count       | Percentage | Count       | Percentage | Count       | Percentage | Count                   | Percentage |
| <b>Documented exceptions to transition meeting not occurring within the appropriate timeline</b> | <b>41</b>   | <b>47</b>  | <b>32</b>   | <b>0</b>   | <b>120</b>  |            |             |            |                         |            |
| NEIS-South   | 8           | 19.51%     | 8           | 17.02%     | 7           | 21.88%     |             | #DIV/0!    | 120                     | 2%         |
| NEIS-Northwest   | 2           | 4.88%      | 5           | 10.64%     | 2           | 6.25%      |             | #DIV/0!    | 9                       | 1%         |
| NEIS-Northeast   | 3           | 7.32%      | 5           | 10.64%     | 4           | 12.50%     |             | #DIV/0!    | 12                      | 1%         |
| NEIS-Carson City   | 5           | 12.20%     | 4           | 8.51%      | 1           | 3.13%      |             | #DIV/0!    | 10                      | 1%         |
| Capability Health and Human Services-South   | 10          | 24.39%     | 12          | 25.53%     | 6           | 18.75%     |             | #DIV/0!    | 28                      | 2%         |
| TMG  | 2           | 4.88%      | 3           | 6.38%      | 5           | 15.63%     |             | #DIV/0!    | 10                      | 1%         |
| Positively Kids  | 1           | 2.44%      | 0           | 0.00%      | 1           | 3.13%      |             | #DIV/0!    | 2                       | 0%         |
| The Continuum  | 0           | 0.00%      | 1           | 2.13%      |             | 0.00%      |             | #DIV/0!    | 1                       | 0%         |
| Advanced Pediatric Therapies   | 2           | 4.88%      | 2           | 4.26%      | 2           | 6.25%      |             | #DIV/0!    | 6                       | 0%         |
| Capability Health and Human Services-North   | 2           | 4.88%      | 2           | 4.26%      | 2           | 6.25%      |             | #DIV/0!    | 6                       | 0%         |
| TMG North  | 1           | 2.44%      | 0           | 0.00%      | 2           | 6.25%      |             | #DIV/0!    | 3                       | 0%         |
| IMD Developmental Agency   | 5           | 12.20%     | 5           | 10.64%     | 0           | 0.00%      |             | #DIV/0!    | 10                      | 1%         |
| Theraplay Solutions  |             | 0.00%      |             | 0.00%      |             | 0.00%      |             | #DIV/0!    | 0                       | 0%         |

**Total Number of transition meetings within the appropriate timeline adjusting for exceptions**

|   |            |            |            |        |     |        |   |         |             |       |
|---|------------|------------|------------|--------|-----|--------|---|---------|-------------|-------|
| Statewide within timeline   | 405        | 93.1%      | 437        | 92.0%  | 362 | 93.3%  | 0 | #DIV/0! | 1204        | 92.8% |
| Statewide not within the appropriate timeline                                 | 30         | 6.9%       | 38         | 8.0%   | 26  | 6.7%   | 0 | #DIV/0! | 94          | 7.2%  |
| <b>Total</b>  | <b>435</b> | <b>475</b> | <b>388</b> |        |     |        |   |         | <b>1298</b> |       |
| NEIS-South within timeframe   | 76         | 92.7%      | 74         | 88.1%  | 81  | 97.6%  | 0 | #DIV/0! | 231         | 92.8% |
| NEIS-South not within the appropriate timeline                                | 6          | 7.3%       | 10         | 11.9%  | 2   | 2.4%   | 0 | #DIV/0! | 18          | 7.2%  |
| <b>Total</b>  | <b>82</b>  | <b>84</b>  | <b>83</b>  |        |     |        |   |         | <b>249</b>  |       |
| NEIS-Northwest Region within timeframe  | 35         | 85.4%      | 32         | 84.2%  | 28  | 70.0%  | 0 | #DIV/0! | 95          | 79.8% |
| NEIS-Northwest not within the appropriate timeline                            | 6          | 14.6%      | 6          | 15.8%  | 12  | 30.0%  | 0 | #DIV/0! | 24          | 20.2% |
| <b>Total</b>  | <b>41</b>  | <b>38</b>  | <b>40</b>  |        |     |        |   |         | <b>119</b>  |       |
| NEIS-Northeast within timeframe   | 15         | 100.0%     | 17         | 81.0%  | 21  | 91.3%  | 0 | #DIV/0! | 53          | 89.8% |
| NEIS-Northeast not within the appropriate timeline                            | 0          | 0.0%       | 4          | 19.0%  | 2   | 8.7%   | 0 | #DIV/0! | 6           | 10.2% |
| <b>Total</b>  | <b>15</b>  | <b>21</b>  | <b>23</b>  |        |     |        |   |         | <b>59</b>   |       |
| NEIS-Carson City within timeframe   | 19         | 95.0%      | 15         | 93.8%  | 11  | 100.0% | 0 | #DIV/0! | 45          | 95.7% |
| NEIS-Carson City not within the appropriate timeline                          | 1          | 5.0%       | 1          | 6.3%   | 0   | 0.0%   | 0 | #DIV/0! | 2           | 4.3%  |
| <b>Total</b>  | <b>20</b>  | <b>16</b>  | <b>11</b>  |        |     |        |   |         | <b>47</b>   |       |
| Capability Health and Human Services South within timeframe                   | 90         | 93.8%      | 103        | 96.3%  | 66  | 98.5%  | 0 | #DIV/0! | 259         | 95.9% |
| Capability Health and Human Services Sout not within the appropriate timeline | 6          | 6.3%       | 4          | 3.7%   | 1   | 1.5%   | 0 | #DIV/0! | 11          | 4.1%  |
| <b>Total</b>  | <b>96</b>  | <b>107</b> | <b>67</b>  |        |     |        |   |         | <b>270</b>  |       |
| TMG within timeframe  | 57         | 98.3%      | 64         | 97.0%  | 77  | 98.7%  | 0 | #DIV/0! | 198         | 98.0% |
| TMG not within the appropriate timeline                                       | 1          | 1.7%       | 2          | 3.0%   | 1   | 1.3%   | 0 | #DIV/0! | 4           | 2.0%  |
| <b>Total</b>  | <b>58</b>  | <b>66</b>  | <b>78</b>  |        |     |        |   |         | <b>202</b>  |       |
| Positively Kids within timeframe  | 40         | 95.2%      | 38         | 100.0% | 27  | 100.0% | 0 | #DIV/0! | 105         | 98.1% |
| Positively Kids not within the appropriate timeline                           | 2          | 4.8%       | 0          | 0.0%   | 0   | 0.0%   | 0 | #DIV/0! | 2           | 1.9%  |
| <b>Total</b>  | <b>42</b>  | <b>38</b>  | <b>27</b>  |        |     |        |   |         | <b>107</b>  |       |

Statewide Early Intervention Performance Data

|  | Preliminary |            | Preliminary |            | Preliminary |            | Preliminary |            | FY23 Unduplicated Total |            |
|--|-------------|------------|-------------|------------|-------------|------------|-------------|------------|-------------------------|------------|
|  | Count       | Percentage | Count       | Percentage | Count       | Percentage | Count       | Percentage | Count                   | Percentage |
| The Continuum within timeframe   | 13          | 68.4%      | 13          | 72.22%     | 0           | #DIV/0!    | 0           | #DIV/0!    | 26                      | 70.3%      |
| The Continuum not within the appropriate timeline                              | 6           | 31.6%      | 5           | 27.78%     | 0           | #DIV/0!    | 0           | #DIV/0!    | 11                      | 29.7%      |
| Total  | 19          |            | 18          |            | 0           |            | 0           |            | 37                      |            |
| APT within timeframe   | 20          | 95.2%      | 26          | 96.3%      | 13          | 81.3%      | 0           | #DIV/0!    | 59                      | 92.2%      |
| APT not within the appropriate timeline  | 1           | 4.8%       | 1           | 3.7%       | 3           | 18.8%      | 0           | #DIV/0!    | 5                       | 7.8%       |
| Total  | 21          |            | 27          |            | 16          |            | 0           |            | 64                      |            |
| Capability Health and Human Services-North within timeframe                    | 4           | 100.0%     | 4           | 57.1%      | 10          | 83.3%      | 0           | #DIV/0!    | 18                      | 78.3%      |
| Capability Health and Human Services-North not within the appropriate timeline | 0           | 0.0%       | 3           | 42.9%      | 2           | 16.7%      | 0           | #DIV/0!    | 5                       | 21.7%      |
| Total  | 4           |            | 7           |            | 12          |            | 0           |            | 23                      |            |
| TMG North within timeframe   | 14          | 100.0%     | 10          | 100.0%     | 9           | 100.0%     | 0           | #DIV/0!    | 33                      | 100.0%     |
| TMG North not within the appropriate timeline                                  | 0           | 0.0%       | 0           | 0.0%       | 0           | 0.0%       | 0           | #DIV/0!    | 0                       | 0.0%       |
| Total  | 14          |            | 10          |            | 9           |            | 0           |            | 33                      |            |
| MD Developmental Agency within timeframe                                       | 22          | 95.7%      | 41          | 95.3%      | 19          | 86.4%      | 0           | #DIV/0!    | 82                      | 93.2%      |
| MD Developmental Agency not within the appropriate timeline                    | 1           | 4.3%       | 2           | 4.7%       | 3           | 13.6%      | 0           | #DIV/0!    | 6                       | 6.8%       |
| Total  | 23          |            | 43          |            | 22          |            | 0           |            | 88                      |            |
| Theraplay Solutions within timeframe   | 0           | #DIV/0!    | 0           | #DIV/0!    | 0           | #DIV/0!    | 0           | #DIV/0!    | 0                       | #DIV/0!    |
| Theraplay Solutions not within the appropriate timeline                        | 0           | #DIV/0!    | 0           | #DIV/0!    | 0           | #DIV/0!    | 0           | #DIV/0!    | 0                       | #DIV/0!    |
| Total  | 0           |            | 0           |            | 0           |            | 0           |            | 0                       |            |